



## Central Ontario Electronic Health System

Andrew Hussain  
Regional Chief Information Officer  
Central Ontario LHINs  
May 2012

For the purpose of this overview it is important to keep in mind the specific definition of eHealth as it compares to other related areas

### eHealth

- The harnessing of information technology and innovation to improve patient care, safety and access (eHealth Ontario 2009)

### Information Management (IM) - Data

- The collection and management of information from one or more sources and the distribution of that information. This ensures efficient use of information for decision making and planning within an organization.

### Information System (IS) - Applications

- The organized collection, processing, transmission and dissemination of data or information in accordance with well defined procedures – automated or manual

### Information Technology (IT) - Hardware

- The acquisition, processing and dissemination of information on physical computing technologies

# eHealth Ontario Activities and Existing Projects

## Information Management (IM) - Data

- Diabetes Registry
- Hospital Report Manager
- Drug Profile Viewer
- Resource Matching and Referral
- Drug Information Systems
- Baseline Dataset
- eReferral
- ePrescribing

## Information System (IS) - Applications

- Digital Imaging Repository
- Physician eHealth/EMRs
- CCAC Systems
- Telemedicine
- Community Care Information Management (CCIM)
- Consumer eHealth
- Connecting GTA
- Patient & Provider Portal
- Ontario Lab Information System (OLIS)

## Information Technology (IT) - Hardware

- Data Centre
- Email
- Authentication/Registration
- User Support
- Application Maintenance
- Network

## With the creation of eHealth Ontario there has been a shift in accountability and direction for eHealth Strategy in Ontario

From	To
No dedicated provincial eHealth Strategy	Funded, approved Strategy
Technology plan	Health System Transformation Blueprint/Strategy
Government responsible for eHealth Strategy development, planning and delivery	Government as stewards; <i>eHealth Ontario</i> responsible for specific eHealth Strategy and Execution; held to account for outcomes
Diffuse/competing/confusing accountability for provincial eHealth efforts	Single point of accountability at <i>eHealth Ontario</i>
Duplication, fragmentation and proliferation of eHealth efforts; very good organizations working in a vacuum	Provincial strategy delivered through orchestrated deployment of local, regional and province-wide solutions "The whole is greater than the sum of the parts"

### What does this mean for the Central East LHIN?

- There will be money for eHealth initiatives, with a focus on IM, to provide better patient care.
- The need to integrate Provincially is not optional.
- LHIN boundaries are virtual and porous when it comes to the electronic health system.

# What are Clusters?

- The LHINs have developed a Cluster based delivery model for the implementation of IS/IM and eHealth initiatives.
- The 14 LHINs have formed three Clusters and each Cluster has a designated lead LHIN which acts on behalf of the Cluster:

Central Ontario Cluster: Bill MacLeod

South West Cluster: Michael Barrett

North East Cluster: Chantale LeClerc

- LHINs will use the cluster models to provide project governance and oversight to ensure successful implementation and adoption of projects.
- The Clusters will:
  - ✓ Support local IM/IS and eHO projects
  - ✓ Facilitate Delivery of eHO projects
  - ✓ Represent initiatives within an individual LHIN and across a series of LHINs
  - ✓ Support development and alignment
    - ✓ Provincially
    - ✓ Locally
    - ✓ Between Clusters

# The Central Ontario Electronic Health System Council (COEHSC)

- Comprised of 6 LHINs in Central Ontario: Central East, Central West, Central, Toronto Central, Mississauga Halton and North Simcoe Muskoka.
- They collaborated to create a council that would provide oversight and direction to those projects or engagements that are common to the Central Ontario LHINs.
- COEHSC is supported and endorsed by the MOHLTC and eHealth Ontario.
- COEHSC membership is comprised of:
  - 6 LHIN CEOs
  - VP eHealth Ontario
  - Central Ontario CIO

# Revised Funding Process

The ministry has changed how PMO funding is flowed to LHINs in 2012/13. They would like to flow PMO funding to the LHINs based on the submission and review of business cases for each eHealth project.

- Projects must be in support of and aligned with the Provincial eHealth mandate.
- Each Cluster will develop a cluster strategy that is in support of and aligns with eHealth Ontario's mandate, as well as the Provincial EHR and individual LHIN objectives.
  - The Central Ontario LHINs are currently in the process of developing a strategy.
- Funds will flow for eHealth projects to the LHIN clusters from both the Ministry, eHO and other funding sources.
  - How the MOHLTC will fund the individual LHIN eHealth Portfolios has not been defined yet. The 3 Cluster CEOs are currently working with the MOHLTC.
- Cluster Governance will set the structure and priorities for the PMO.
  - This work is currently underway as part of the Cluster Strategy and will also be shaped and informed by the Cluster Operating Principles.
- COEHSC has reduced the PMO operational costs in 2012/13 by 15% through CEO/LHIN collaboration under a new consolidated delivery model.
  - Historically each LHIN received \$600K.

# Active Projects Within The Central East LHIN

Project	Local / Cluster/Provincial
Clinical Document Repository Data Contributors (within the cGTA Project)	Cluster
Clinical Document Repository Data Viewers (within the cGTA Project)	Cluster
cGTA Health Information Access Layer (HIAL) Procurement	Cluster
eHealth Strategic Planning	Cluster & Local
TDIS (Timely Discharge Information System)	Local
SUBMIT (Surgical Utilization Booking Management Integration Tool)	Local
Primary Care Physician to Specialists eReferral System	Partner with SE LHIN
Common Network, WAN and Security Management	Local
Microsoft Licensing Agreement for Hospitals	Local
Standard Order Sets	Local
Project Collaboration Document Management	Local
Long Term Care Capacity Tracking	Local



# Active Projects Within The Central East LHIN

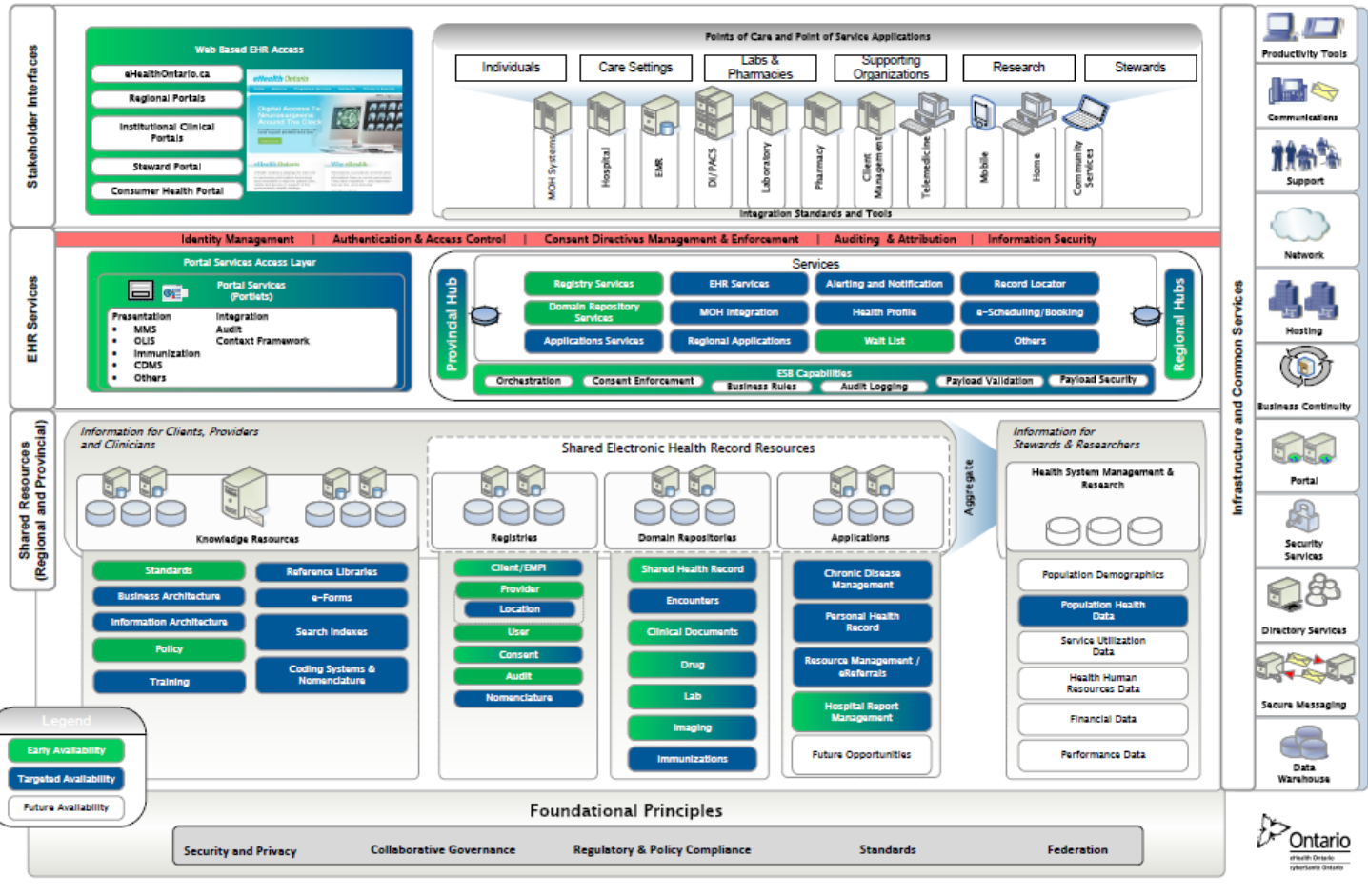
Project	Local / Cluster/Provincial
Resource Matching & Referral Business Transformation Initiative (RM&R BTI)	Provincial
Community Support Services Common Assessment Project (CSS CAP)	Provincial
Mental Health Common Assessment Project (MH CAP)	Provincial
Integrated Assessment Record (IAR)	Provincial
Physician EMR Adoption	Provincial
Ontario Laboratory Information System (OLIS)	Provincial
One Network Migration	Provincial
Drug Information and ePrescribing	Provincial

# Governance and Accountability

- Under the construct of the Cluster Strategy and Cluster Operating Principles, the LHINs are working in collaboration with the MOHLTC and eHealth Ontario to:
  - ✓ Define Local Projects, Cluster Projects and Provincial Projects
  - ✓ Document how priorities are set and how decisions are made
  - ✓ Identify timelines for implementation and adoption at a local and Provincial level
  - ✓ Develop clear lines of accountability
    - ✓ LHIN accountability
    - ✓ Provincial accountability (eHealth Ontario, MOHLTC)
  - ✓ Fair and transparent processes that are auditable
  - ✓ Steward successful implementation and adoption of projects

# Ontario's eHealth Blueprint

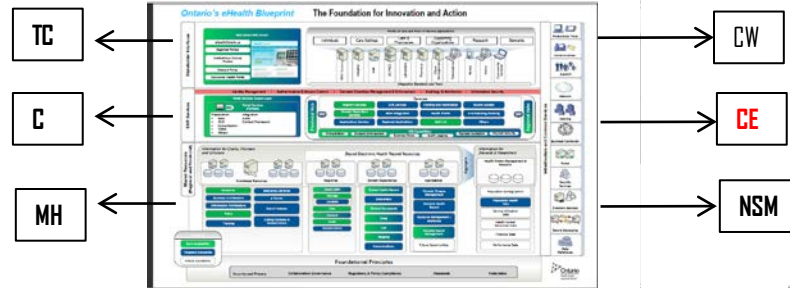
## The Foundation for Innovation and Action



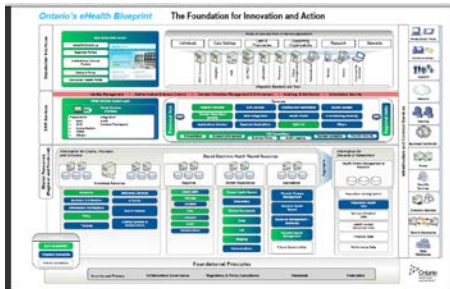
Note: This is a Provincial Blueprint and not a completed plan. Gaps will need to be identified.

# Each Cluster will develop a local version of the Provincial Blueprint

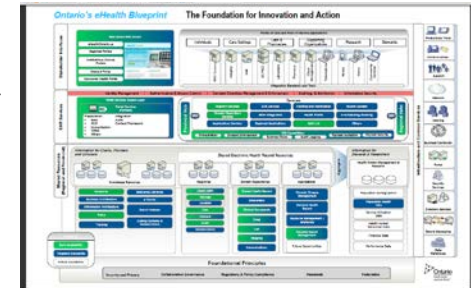
## Central Ontario



## South West Ontario



## North East Ontario



## eHealth Ontario

# Next Steps

A collaborative engagement to develop:

- ✓ Central Ontario Cluster Strategy
- ✓ Project Governance and Accountability between LHINs, eHealth Ontario and the MOHLTC
- ✓ Alignment to existing Local and Provincial LHIN priorities
- ✓ Clearly defined Cluster Implementation Road Map
- ✓ Sustainability Modeling
- ✓ Develop or refresh local electronic health system strategies

